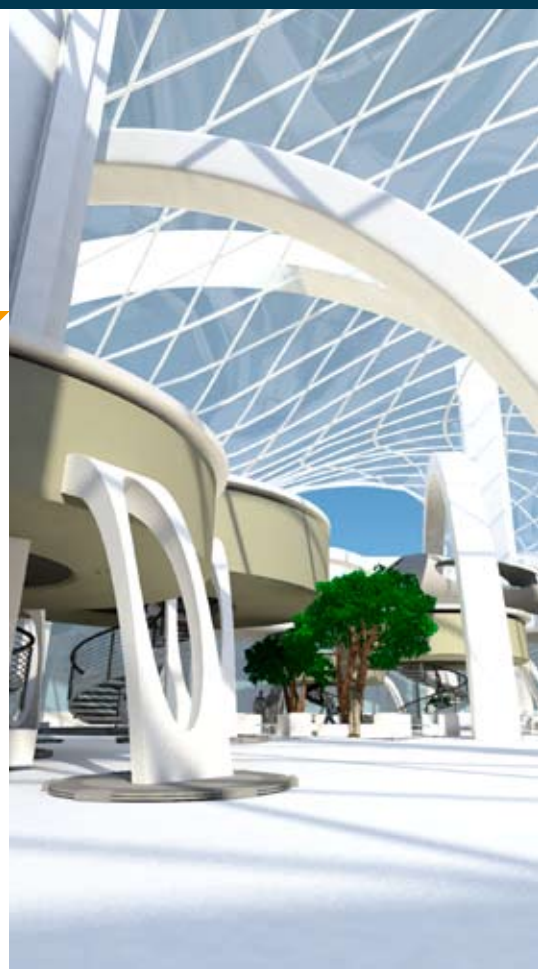
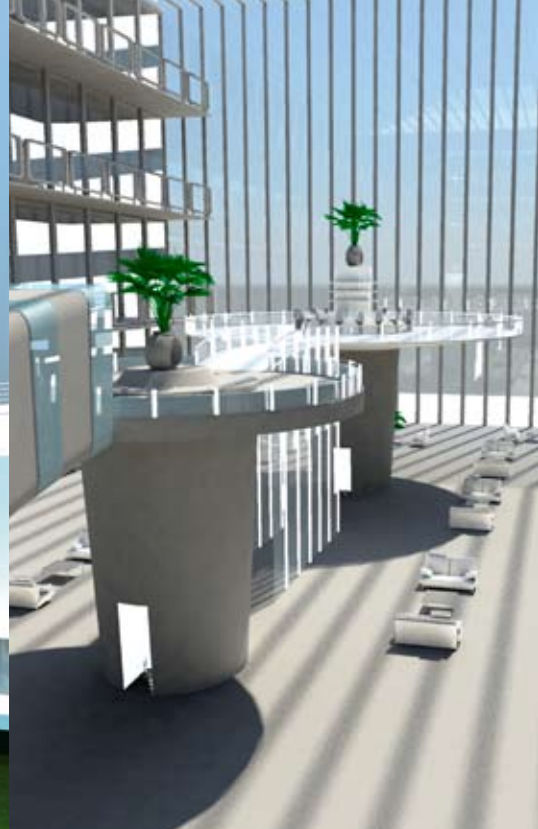


Dinalog Campus

*The place to be for innovations
in logistics and supply chain management*



DINALOGCAMPUS



Are you looking for inspiration, for opportunities to explore new technologies and procedures and for state-of-the-art education, all within the context of logistics and supply chain management in Europe?

The Dinalog Campus offers ideal conditions for logistics and supply chain professionals wanting to take the next step and improve their company's performance.

Dinalog: connecting top-notch science with down-to-earth practice.

The Dinalog Campus is part of the Dutch Technological Innovation Program for logistics and supply chain management and contributes to the achievement of the corporate ambition statement of the Dinalog brand family.

Dinalog includes the Dutch Institute of Advanced Logistics (DINALOG), Dinalog Campus and Dinalog Friends (companies and institutions subscribing to the objective to innovate the European Logistics and supply chain sector).

The ambition statement is as follows:

In 2020, the Netherlands will be the European market leader in controlling flows of goods passing through one or more European countries.

Multinational and European distributors stand to benefit from this.

Dinalog, the Institute

As one of the most important role players on the Dinalog Campus, the Dutch Institute for Advanced Logistics was established to roll out a research and development program for logistics and supply chain management.

It will be the physical and virtual location for the private sector to cooperate with centers of excellence (the universities) and where post-experience education will be organized.

The mission of the Dinalog Institute

- To be the premier European institute for applied research and executive post-experience education in logistics and supply chain management.
- To act as a catalyst for the attraction and retention of innovative business activities in the area of supply chain control, concentrated around the Dinalog Campus in Breda.

Dinalog's objectives

- The development of scientific knowledge on advanced logistics of world renown, both in the academic and business communities.
- To create an environment that attracts both the best researchers from all over the world and where innovative companies are willing to establish their key professionals to work on supply chain and logistics management improvements.
- To provide exposure to research results from the best universities worldwide.
- To develop, organize and create markets for post-experience education in supply chain management and logistics in close cooperation with Dinalog's network of partners.

In short: to connect up scientific expertise from all over the world with business and continuous education within the whole field of logistics and supply chain management.



That is the Dinalog Campus's aim: connecting top-notch science and education with down-to-earth practice, in order to implement innovations and optimize operations. The Dinalog Campus offers an open atmosphere which stimulates interaction, creativity, innovation, entrepreneurship and a collective ambition to improve continuously.



Although physically based on the *Dinalog Campus* in Breda, the Netherlands, the Dinalog Campus will have a world-wide reach.

Dinalog, the Campus

The Dinalog Campus will be established based on three main innovation topics for logistics and supply chain management. In general all activities are oriented around:

- Cross chain control centers: a center from which several supply/demand chains are managed by means of modern technology, advanced software and top professionals. Physical, financial and information flows are managed here.
- Multi-company service logistics: options for combined after-sales of products. Based on the cradle-to-cradle principle, until the end of the economic life-cycle.
- Mainports in control: control by the Dutch ports of all transport movements through them, with the efficient use of the infrastructure in the immediate vicinity and beyond that in the European hinterland.

The goal of the Dinalog Campus

To offer a state-of-the-art environment in which tests can be carried out and experience gained; to demonstrate projects and best practices; to provide facilities for sharing knowledge and/or adding new innovations; to provide the right conditions for start-ups, new businesses and effective practical education facilities.

According to the aforementioned specific research program of Dinalog, the campus will:

- Attract qualified European industry partners with their supply chain control towers and planning departments.
- Host their data centers and also facilitate their service logistics operations.
- Stimulate interaction between the academic world and the private sector.
- Dinalog Campus will also attract university innovators in research and education.
- In addition, Dinalog provides a hothouse for innovative new companies, start-ups, and for new and post-education activities.

Last but not least, the Dinalog Campus will be a meeting place for professionals in the field of logistics and supply chain management by hosting industry organisations, platforms and all kinds of intermediaries, service providers, business partners and government agencies.

Naturally, various social events will be organized during the year. As an outstanding networking organization, Dinalog will be all you need to connect with the latest insights and with your international colleagues.

Location

The Municipality of Breda has reserved a well-located site of 14 hectares along the main highway connecting the Amsterdam, Rotterdam and Antwerp hinterlands (the A16), as a location for the Dinalog Campus. Here, you will find the most stimulating conditions for the implementation of new scientific insights.

- **Dinalog Incubator** will trigger new inventions and business spin-offs.
- **Dinalog Laboratories** will enable universities and private companies to investigate the practical applications and integration of newly-invented or newly-approved systems.
- **Dinalog Experience** is, in a way, one of the communication tools of the logistics sector, e.g. by stimulating students to choose for a career in logistics.
- The **Dinalog Food Court, Library, Auditorium** and the **Dinalog Central Meeting Place** will connect students and professionals from everywhere in the international field of logistics.

If you have any questions about our admissions policy, calendar and other requirements, members of the Dinalog promotion & acquisition team will gladly reply to your queries.

Dinalog promotion & acquisition team:

Netherlands Foreign Investment Agency
Holland International Distribution Council
N.V. BOM (Noord-Brabant Development Agency)
REWIN West-Brabant
N.V. BrIM Breda

Dinalog Campus

c/o NV BrIM Breda
City of Breda, Economic Affairs Department
P.O. Box 2522
4800 CM Breda
The Netherlands
+31 (0)76 52 93 750
Email: brim@breda.nl

WWW.DIALOG.NL/CAMPUS



Let's get inspired by Dinalog!

Let's build the future of logistics and supply chains in Europe on the Dinalog Campus, Breda!



The Dinalog program is empowered by the Ministry of Economic Affairs and the Ministry of Transport, Public Works and Water Management.



The City of Breda is the leading partner in the development of the Dinalog Campus, which is also empowered by the Province of North Brabant.

